

USEFUL INFORMATION BEFORE YOUR CRUISE



The crew will welcome you on board and will accompany you throughout the cruise.

FORMALITIES

According to the destination, make sure that your identity documents are updated. An identity card or a valid passport is required. We recommend non-EU nationals to contact their embassy in order to inquire about the formalities.

MONEY ON BOARD

All payments on board are in euro: cash, checks, bank cards (except Electron and Maestro) are accepted. There are no currency exchange facilities or ATMs on board.

SPECIFIC DIET

Remember to inform your travel agent before departure about your specific diet or food allergies so that your cruise runs as smoothly as possible.

WELCOME ABOARD



SHOP

Here you will find postcards, stamps, souvenirs and practical items.



CATERING

All meals take place in our onboard restaurant (unless otherwise stated) in a single sitting at specific times.



CABINS

All cabins have a large picture window, air conditioning, a bathroom with shower and toilet, bath towels and hair dryer.



WI-FI

Our boats provide free Wi-Fi. The free use of a tablet is also available on board.



SMOKING

The entire boat is non-smoking except the sun deck.



DOCTOR

There is no doctor on board. Our cruises are close to the river shores, and if needed the steward will contact the nearest medical service.



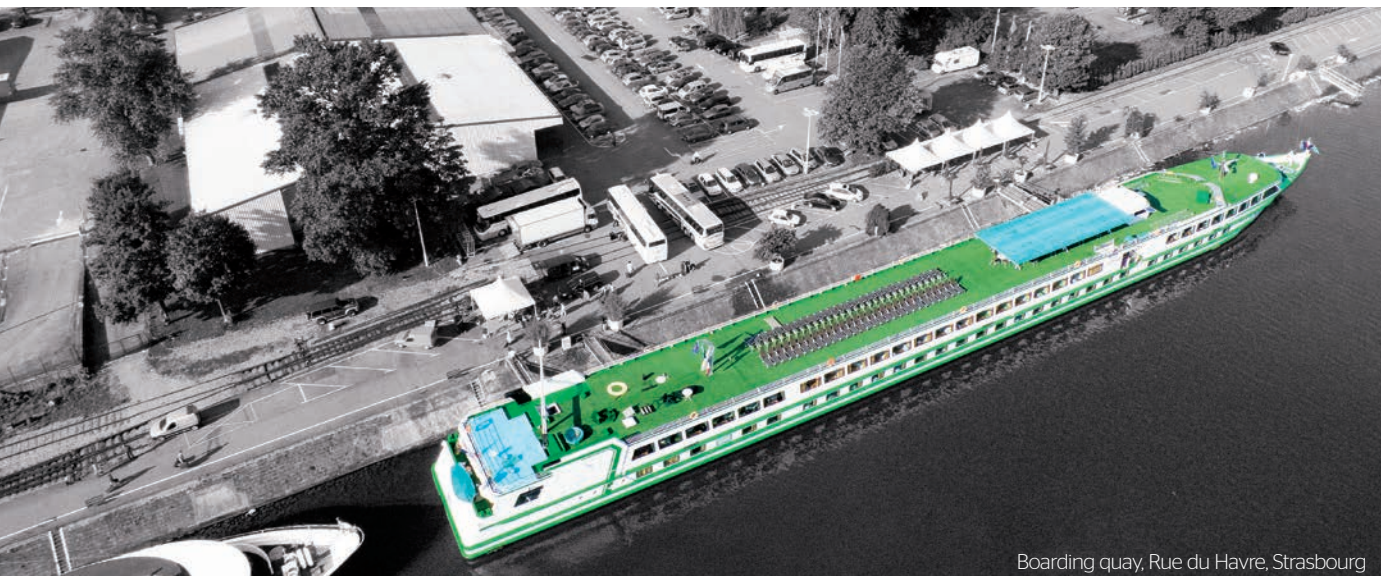
TIPPING

Tipping is left to the discretion of the customer.



ANIMALS

Animals are not allowed on board.



Boarding quay, Rue du Havre, Strasbourg

... See you soon

ACCESS TO OUR MOORING POINT IN STRASBOURG

ADDRESS:

3 BIS RUE DU HAVRE IN STRASBOURG
GPS data: 48.566623, 7.782805

YOU ARRIVE:

BY CAR:

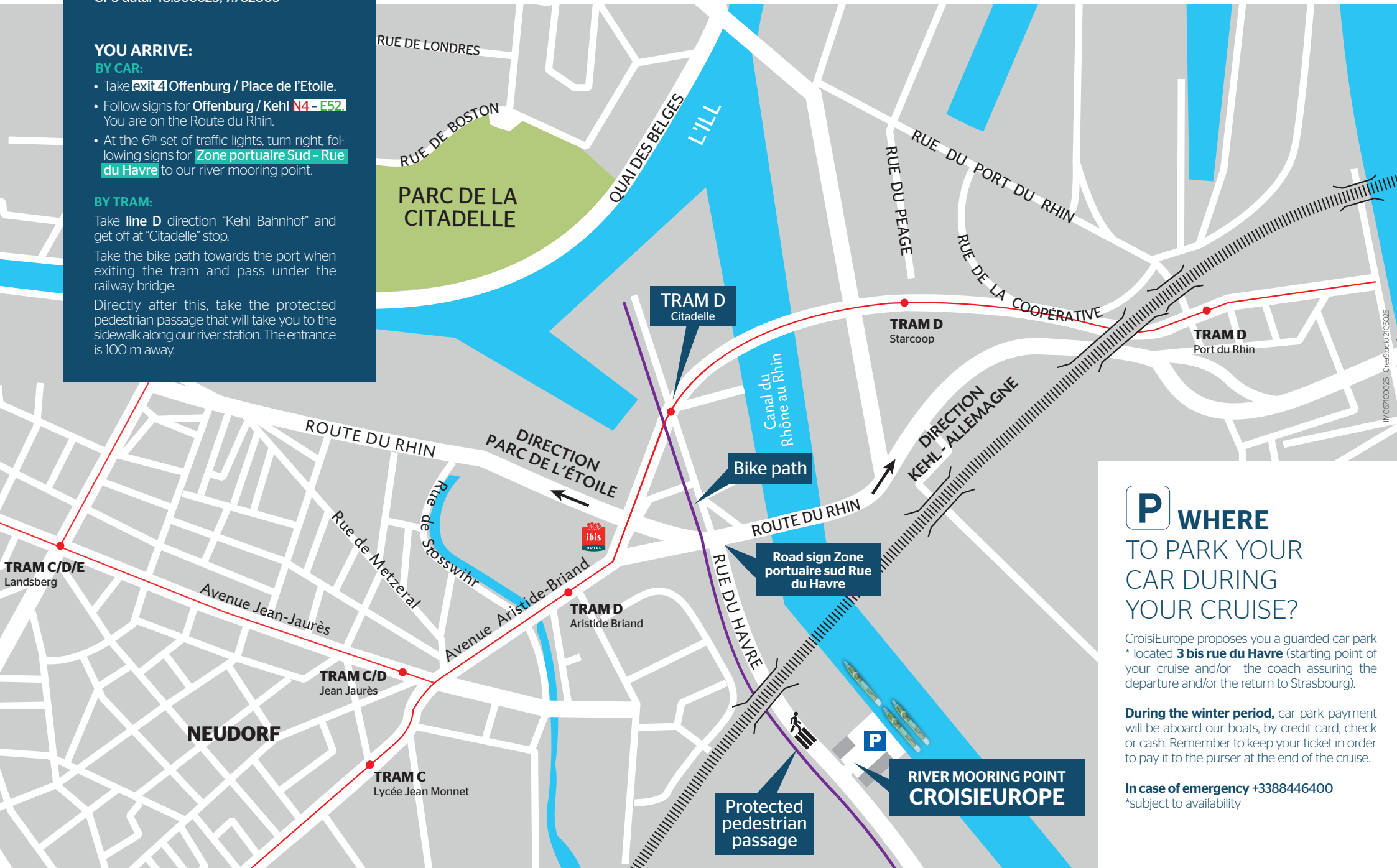
- Take **exit 4** Offenburg / Place de l'Étoile.
- Follow signs for **Offenburg / Kehl N4 - E52**. You are on the Route du Rhin.
- At the 6th set of traffic lights, turn right, following signs for **Zone portuaire Sud - Rue du Havre** to our river mooring point.

BY TRAM:

Take **line D** direction "Kehl Bahnhof" and get off at "Citadelle" stop.

Take the bike path towards the port when exiting the tram and pass under the railway bridge.

Directly after this, take the protected pedestrian passage that will take you to the sidewalk along our river station. The entrance is 100 m away.



P WHERE TO PARK YOUR CAR DURING YOUR CRUISE?

CroisiEurope proposes you a guarded car park
* located **3 bis rue du Havre** (starting point of
your cruise and/or the coach assuring the
departure and/or the return to Strasbourg).

During the winter period, car park payment
will be aboard our boats, by credit card, check
or cash. Remember to keep your ticket in order
to pay it to the purser at the end of the cruise.

In case of emergency +3388446400
*subject to availability

**RIVER MOORING POINT
CROISIEUROPE**

**Protected
pedestrian
passage**

**Road sign Zone
portuaire sud Rue
du Havre**

Bike path

**TRAM D
Citadelle**

**TRAM D
Starcoop**

**TRAM D
Port du Rhin**

**TRAM D
Aristide Briand**

**TRAM C/D
Jean Jaurès**

**TRAM C
Lycée Jean Monnet**

**TRAM C/D/E
Landsberg**

NEUDORF

**PARC DE LA
CITADELLE**

L'ILL

QUAI DES BELGES

RUE DE LONDRES

RUE DE BOSTON

RUE DU PEAGE

RUE DU PORT DU RHIN

RUE DE LA COOPÉRATIVE

ROUTE DU RHIN

**DIRECTION
PARC DE L'ÉTOILE**

ROUTE DU RHIN

**DIRECTION
KEHL - ALLEMAGNE**

Rue de Metzeral

Avenue Jean-Jaurès

Avenue Aristide Briand

RUE DU HAVRE

**ibis
HOTEL**