



SAFARI-CRUISE IN

# *Southern Africa*

SOUTH AFRICA ♦ BOTSWANA ♦ NAMIBIA ♦ ZIMBABWE









# Welcome to the edge of the world...

From Johannesburg to Victoria Falls, be prepared for spectacular scenery overflowing with history and wildlife as you take a break in our exclusive lodge on a private island. This in-depth voyage will take you to the heart of one of the most beautiful natural reserves—Chobe National Park.

On board your luxury ship, the African Dream, you'll discover the secrets of Lake Kariba—a veritable oasis at the other end of the earth—before taking in the grandeur of what David Livingstone called the “smoke that thunders,” Victoria Falls.

Welcome to the dawn of civilization.

---

THE RV AFRICAN DREAM

4

CASCADES LODGE

8

SAFARI AND CRUISE VACATION

72

THINGS TO KNOW

78

---

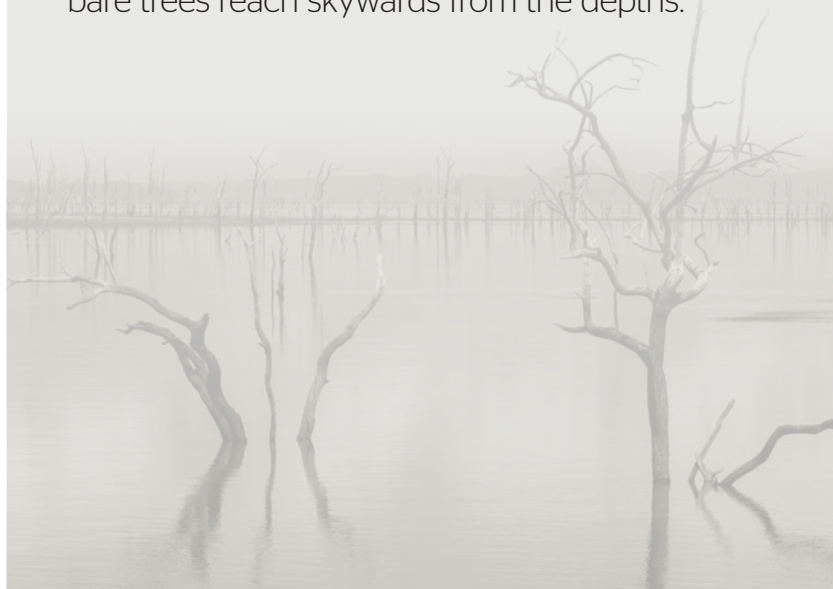




# Welcome aboard!



In a refined and comfortable atmosphere, the RV African Dream sails on Lake Kariba through emblematic landscapes where drowned, bare trees reach skywards from the depths.



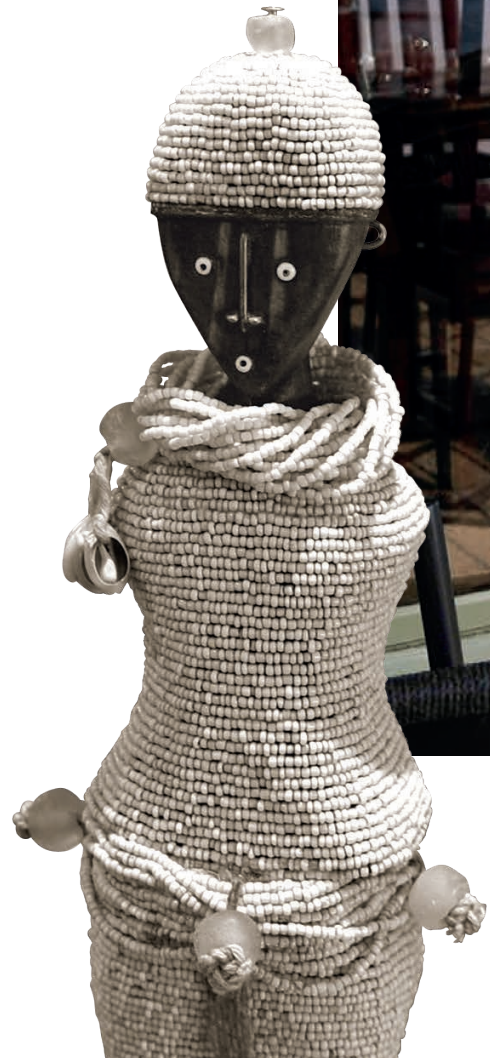






*The sun rising  
on another  
beautiful day*

6





# THE RV AFRICAN DREAM

Built in	2018
Length	33 m (108 ft.)
Width	8 m (26 ft.)
Cabins	Six 193-sq.ft. cabins (18m²) with French balcony Two 193-sq.ft. cabins (18m²) with small private terrace
Services	A nature and wildlife Observation Deck puts you in the heart of your surroundings. Binoculars available on the ship. An intimate outdoor lounge area, small pool and solarium are there to help you relax, catch some rays, and cool off. The lounge and restaurant have panoramic views so you don't miss a thing.
Activities	Books and board games.





# Cascades Lodge



Our traditionally decorated, luxury lodge is located in the heart of the wild on our private island, where you'll have no problem getting away from it all.









*Large picture windows  
and doors make you feel like  
you're living out in the open*





# CASCADES LODGE

Bungalows	Eight traditionally decorated, top-comfort bungalows with 861 sq. ft. of living space (80 m²).
	They include a bedroom, a living area, and a large bathroom with shower and bathtub. They're equipped with a TV and DVD player, air conditioning, hairdryer, tea and coffee amenities and a mini-bar.
	To better accommodate our clients, each bungalow comes with a private swimming pool and a large adjoining terrace with deckchairs and an exterior shower.
Services	Restaurant, lounge and bar area, spacious and panoramic terrace with a view of the Zambezi River and campfire area, laundry service.
Activities	Discover the culture, history and traditions of Southern Africa. Land and water safaris. Fishing equipment can be rented.



*Luxury, calm,  
and exquisite pleasure*



# Safari and cruise vacation



From Cape Town to Victoria Falls, Johannesburg to Chobe National Park and Lake Kariba, this part of the continent tells an atypical tale. Enjoy breathtaking scenery as you are immersed in the habitat for some of the most astounding animals in the world.

Join us for an exclusive 11-day/8-night safari-cruise full of once-in-a-lifetime sensations in first-class accommodations.

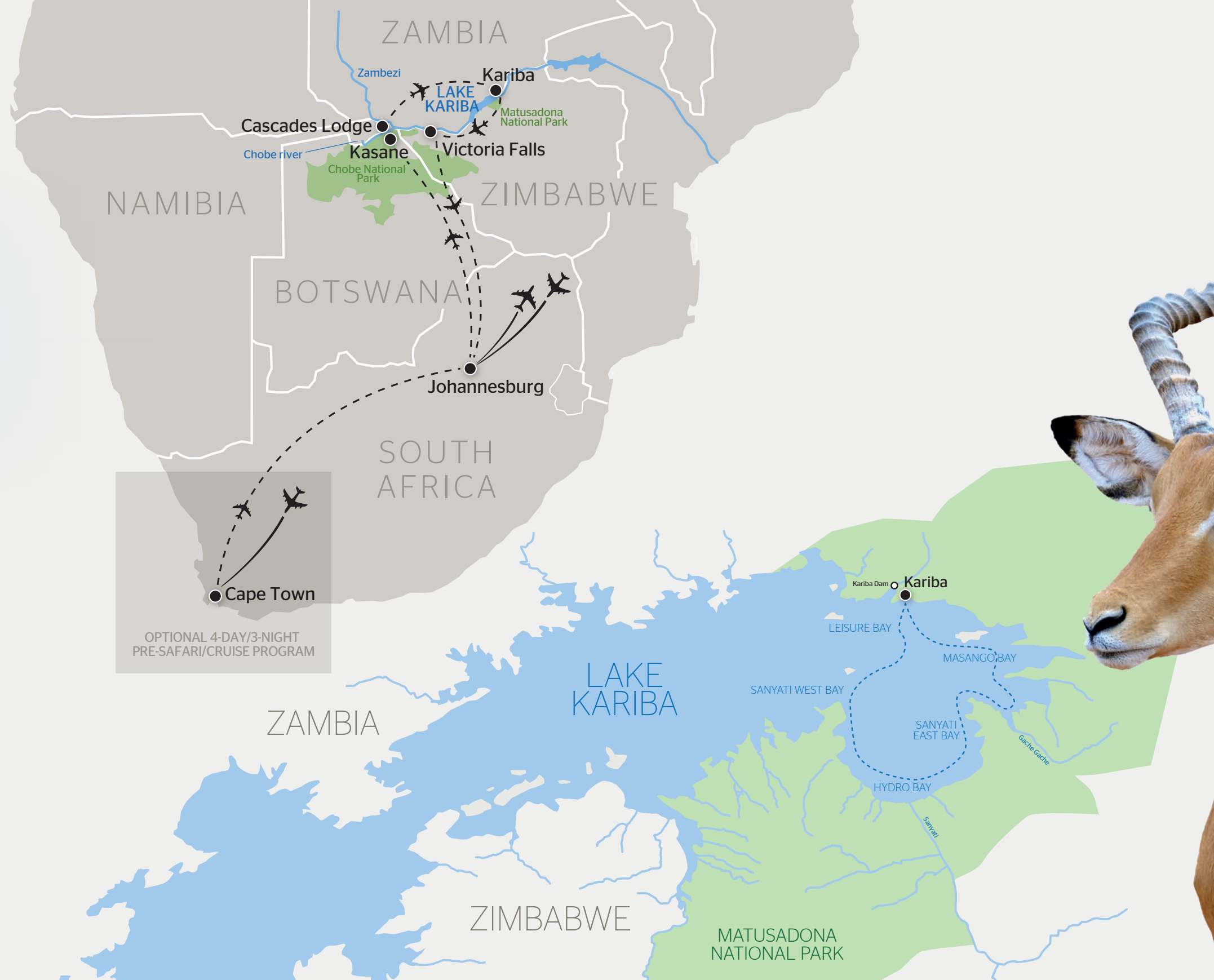
## OPTIONAL 4-DAY/3-NIGHT PRE-SAFARI/CRUISE PROGRAM

### The Cape of Good Hope

- Ascent of Table Mountain
- Discovery of the Cape of Good Hope
- Guided tour of Robben Island
- Tasting of South-African wines at a reputable estate
- Observation of the penguin colony near Simon's Town















*Matusadona National Park*







## SAFARI AND CRUISE THROUGH SOUTHERN AFRICA

Your cruise on board the African Dream as well as your stay at the CroisiEurope lodge are fully dedicated to the protected areas of Lake Kariba and Chobe National Park.

Life on board and at the lodge revolves around the discovery and observation of the local fauna and flora, providing constant enchantment.

## THE SAFARIS

We offer two types of safari experiences:

- Water safaris on small-crafts accommodating 16 passengers.
- Land safaris in open-air, four-wheel-drive vehicles. This provides the best conditions for taking photos.

Our safaris are set up to delve into the hidden world of the nature and wildlife found within the various parks and waterways on our journey. Sense the anticipation and awe rise as our vehicles and crafts move in closer to observe a herd of elephants, a pair of giraffes, a single crocodile, or a majestic African sea eagle.





## Did you know?

The legend of the river god Nyaminyami haunts the tales told within the valley and along the river bends of the Zambezi River and Lake Kariba. He provided water and food for the tribespeople settled along the banks. When the dam was built in the 1950s, tens of thousands of these tribespeople were forced to move elsewhere.

The dam was built over the rock where they believed Nyaminyami lived and anyone who came near this rock would be subject to his wrath. When several tragic events touched to construction of the dam, many locals attributed them to offenses against him.

Although many people still evoke his presence as a spirit, he is nowadays considered a protector of the lake and its inhabitants.



## CHOBE NATIONAL PARK

Chobe National Park contains the most-expansive biodiversity found in Botswana. Within its almost 4,248 square miles (11,000 km<sup>2</sup>) are more than 250 species of animals, including the largest concentration of elephants in Africa.

## MATUSADONA NATIONAL PARK

When the lands were flooded after the construction of the Kariba Dam, thousands of animals were relocated to Matusadona National Park.

This protected area—where hunting is prohibited—contains ready food sources providing a great environment for buffalos, waterbucks, zebras, elephants, and impalas.





# CroisiEurope hospitality



Everything is INCLUDED in your safari and cruise:

- All meals during the entire vacation
- All beverages on board the ship and at the lodge

For a more enjoyable experience:

- French/English bilingual tour guides
- Dedicated CroisiEurope steward on board the ship and manager at the lodge



Lake Kariba



# SOUTH AFRICA



## INFORMATION

**Population:** approximately 56 million

**Area:** 471,445 sq. mi. (1.22 million km²)

**Capital:** Pretoria

**Official languages:** Afrikaans, English, Ndebele, Northern Sotho, Sotho, Swazi, Tsonga, Tswana, Venda, Xhosa and Zulu.

**Religions:** Predominantly Protestant with smaller Catholic, Muslim, and Hindu populations.

## WEATHER

South African summers begin in October and end in March. Temperatures during this time can be between 59°F (15°C) at night and 95°F (35°C) at the peak of day. Blooming begins in September and intensifies from December to March. In winter, which goes from April to September, count on temperatures varying from 32°F (0°C), or even less, at night and up to 68°F (20°C) during the day. Although temperatures can vary depending on the region, the climate in southern Africa usually remains mild all year round.

## CUISINE

Traditional cuisine is a mix of Dutch, Cap Malay, and Indian cooking. The Cap Malay are known for a spiced meat dish called “bobotie” and stews called “bredie.”

## CURRENCY

The currency in South Africa is the rand.

For the current exchange rates, please consult websites such as [www.xe.com](http://www.xe.com) or [www.onada.com/currency/converter](http://www.onada.com/currency/converter).

Banks are readily available, and it is rather easy to exchange money if needed. Visa and MasterCard are accepted in most restaurants, stores, and hotels.

## SHOPPING

South Africa is known for its diamonds and semi-precious stones. Other objects of interest include leather (buckskin, ostrich), pottery, and safari wear.

## OPENING HOURS

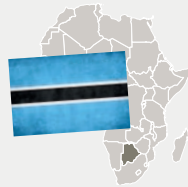
Banks are generally open non-stop from 8:30 a.m. to 3:30 p.m., Monday to Friday. Some are open on Saturday mornings from 8:30 a.m. to 11:00 a.m. Post offices are usually open from 8:00 a.m. to 4:00 p.m. during the week and from 9:00 a.m. to 12:00 p.m. on Saturday. Stores and boutiques are normally open from 9:00 a.m. to 6:00 p.m. Monday to Friday, and from 9:00 a.m. to 1:00 p.m. on Saturday.

In tourist spots, stores tend to have longer opening hours, and can be open all weekend as well.

## TELEPHONE/INTERNET

There is good network access in the city and along the main routes. Most hotels offer Wi-Fi access.

# BOTSWANA



## INFORMATION

**Population:** approximately 2.26 million

**Area:** 224,610 sq. mi. (581,730 km²)

**Capital:** Gaborone

**Official languages:** English, although Setswana is widely spoken across the country.

**Religions:** Predominantly Protestant. Approximately 20% of citizens espouse no religion.

## WEATHER

Botswana has a semi-arid, subtropical climate. It's dry and cool in the winter (May to October), and very hot and rainy in the summer (between November and April). The maximum temperatures can reach as high as 95°F (35°C) during the day and 50° F (10°C) at night.

## CUISINE

Traditional food varies from region to region and tribe to tribe, but the national dish of Botswana is called Seswaa.

## CURRENCY

The currency in Botswana is the pula.

For the current exchange rates, please consult websites such as [www.xe.com](http://www.xe.com) or [www.onada.com/currency/converter](http://www.onada.com/currency/converter).

Major credit cards are accepted only in certain establishments.

## SHOPPING

Basketry, fabric, and animal statues are the most predominant items for sale to tourists.

## TELEPHONE/INTERNET

The cell phone networks are very good in the cities. On the other hand, the Chobe National Park area has poor reception and connection to the Internet will be almost impossible.

# NAMIBIA



## INFORMATION

**Population:** approximately 2.48 million

**Area:** 318,772 sq. mi. (824,270 km²)

**Capital:** Windhoek

**Official language:** English

In addition to English, there are over eight other officially recognized languages and three officially recognized regional languages.

**Religion:** Predominantly Protestant (50% Lutheran), with approximately 15% of the population holding indigenous beliefs.

## WEATHER

Namibia has three seasons:

- A hot, dry season (first part of the summer) from October to December.
- A hot, wet season (blooming season) from January to April
- And a cold, dry season (winter) from May to September

## CUISINE

Meat is very important in Namibian cooking. Kapana, for instance, is a street food loved all over the country. The meat is cooked to perfection over a grill, and then dipped in a box of chili powder and salt. It is also served with a delicious salsa-type sauce that is made of tomatoes, onions, chilies, vinegar, and oil.

## CURRENCY

The official currency is the Namibian dollar, but the South African rand is accepted in some areas as well.

For the current exchange rates, please consult websites such as [www.xe.com](http://www.xe.com) or [www.onada.com/currency/converter](http://www.onada.com/currency/converter).

## SHOPPING

Tourist items for sale include statues, basketry, and handmade wood and leather objects.

## TELEPHONE/INTERNET

Like Botswana, cell phone networks are readily available in the cities. The Caprivi Strip, on the other hand, has little to no cell phone or Internet service available.

# ZIMBABWE



## INFORMATION

**Population:** approximately 15.6 million

**Area:** 150,872 sq. mi.

**Capital:** Harare

**Official languages:** Zimbabwe has 16 official languages, including English.

**Religion:** Predominantly Christian, with 11% of the population following ethnic religions.

## WEATHER

Winter is from May to October. Days are dry and sunny with temperatures between 68° and 77° F (20/25°C). Nevertheless, temperatures can drop considerably at night, reaching 41° F (5°C) at times.

Summer is from November to April. Temperatures during the day are hot, 86° to 95° F (30/35°C), and the air is muggy and humid. At night, temperatures can cool off to 57° F (14°C). Thunderstorms are frequent in the late afternoons. The blooming season is from November to March.

## CURRENCY

Zimbabwe's official currency is the US dollar.

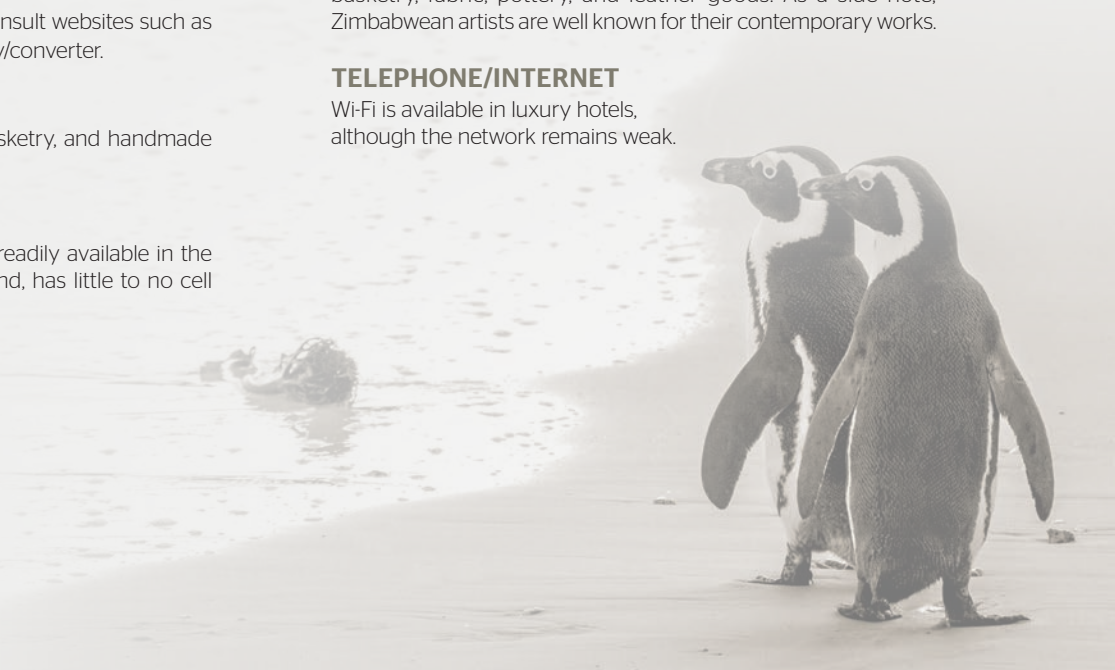
Withdrawing money is hard to do and is limited to \$100 per day. Payment by credit or debit card is not widespread.

## SHOPPING

Handmade items of interest for sale are jewelry, sculptures, basketry, fabric, pottery, and leather goods. As a side note, Zimbabwean artists are well known for their contemporary works.

## TELEPHONE/INTERNET

Wi-Fi is available in luxury hotels, although the network remains weak.







  
**CroisiEurope**  
Cruises